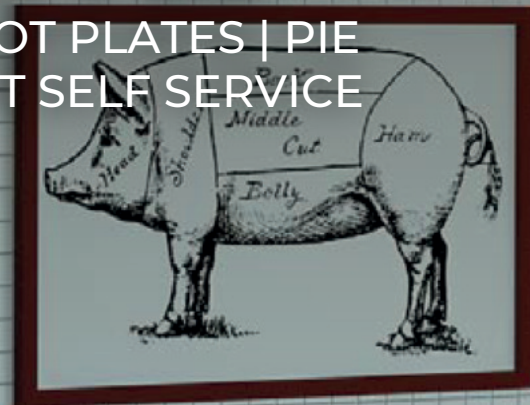


# AMALIA CURVED

COLD | HOT | BAINE MARIE | HOT PLATES | PIE  
SUSHI COUNTER | OPEN FRONT SELF SERVICE



# TABLE OF CONTENTS

## ABOUT THIS MODEL

1

## AMALIA CURVED

Size Specifications

Technical Specifications

Gallery

2

## ABOUT THIS MODEL

Combining known reliability with a variety of exposure solutions and relevant energy saving innovations, these cabinets have been developed for quality small and medium food retail outlets.

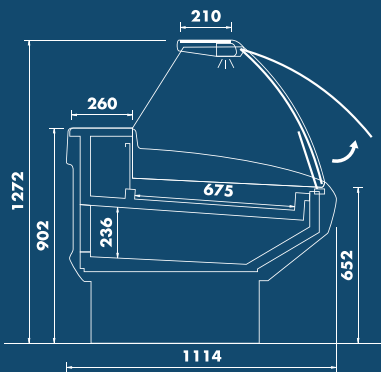
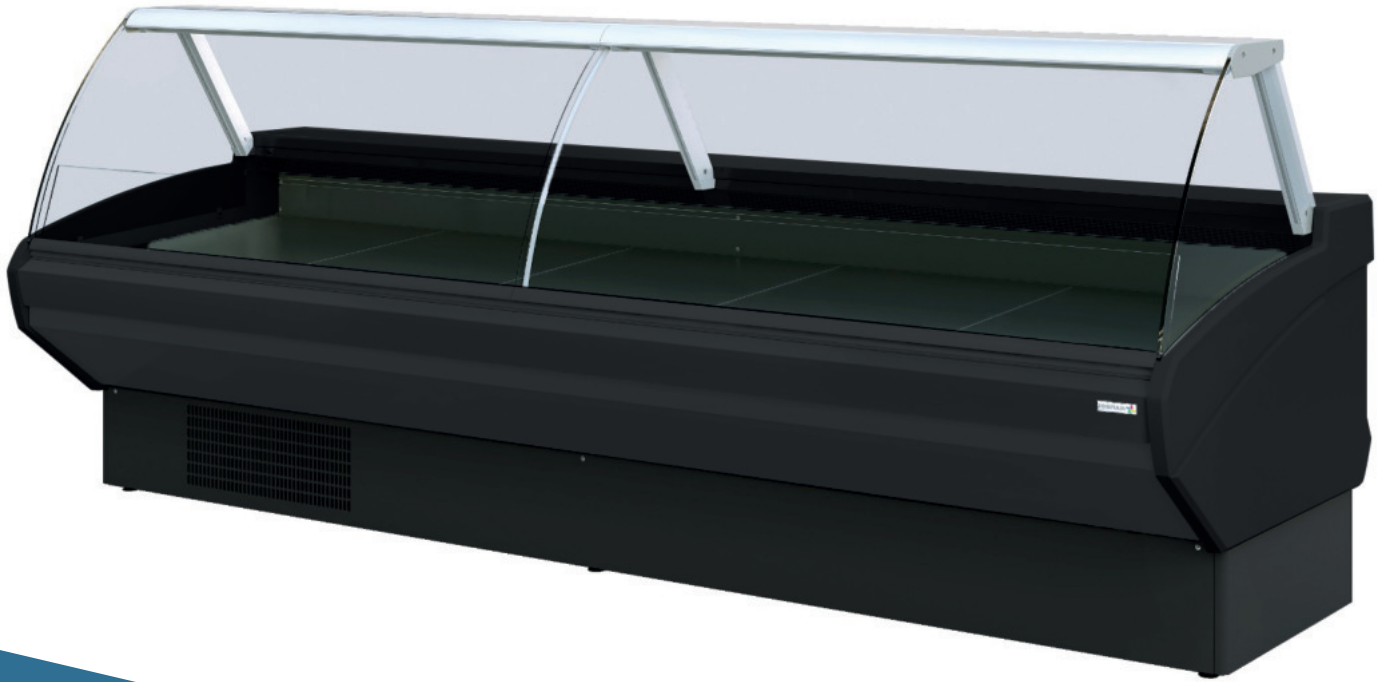
Vertical or curved hydraulic glasses, side panels in PVC, with feet or an apron.

- 1 Year guarantee
- Square Glass Range – Stock item
- Curve Glass range – Non-stock item
- Fan assisted refrigeration
- Automatic evaporation of defrost water
- LED lighting
- Anti-mist heating elements for front glasses
- Easy to use electronic controller
- Display deck in stainless steel
- Glass top
- Other versions available: Cold plate (PF), Refrigerated-gastronorm-containers (CF) Bain-marie (BM), Hot plate (PQ) & Bakery (POA)
- Multiplexible
- Side & front panels in lacquered wood (optional)
- Glass support in anodized aluminium profile

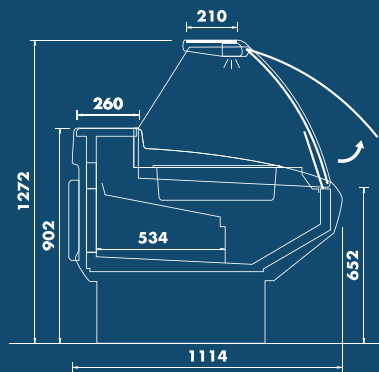


# AMALIA CURVED

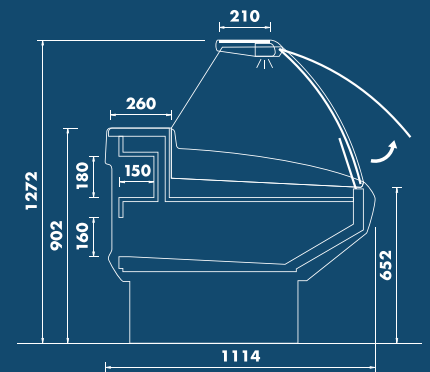
## SIZE SPECIFICATIONS



VCE PF



VCE CR



VCE PAO

# AMALIA CURVED

## TECHNICAL SPECIFICATIONS

MODEL	TOTAL LENGTH	LENGTH WITHOUT SIDE PANELS	TOTAL DISPLAY AREA			NUMBER OF DOORS
			VCE FV	VVE FV	VBS FV	
AMALIA 625	705mm	625mm	0,45m <sup>2</sup>	0,44m <sup>2</sup>	0,53m <sup>2</sup>	-
AMALIA 937	1017mm	937mm	0,69m <sup>2</sup>	0,67m <sup>2</sup>	0,80m <sup>2</sup>	1
AMALIA 1250	1330mm	1250mm	0,93m <sup>2</sup>	0,91m <sup>2</sup>	1,06m <sup>2</sup>	1
AMALIA 1562	1642mm	1562mm	1,16m <sup>2</sup>	1,14m <sup>2</sup>	1,33m <sup>2</sup>	2
AMALIA 1875	1955mm	1875mm	1,39m <sup>2</sup>	1,36m <sup>2</sup>	1,59m <sup>2</sup>	2
AMALIA 2500	2580mm	2500mm	1,87m <sup>2</sup>	1,83m <sup>2</sup>	2,10m <sup>2</sup>	3
AMALIA 3125	3205mm	3125mm	2,34m <sup>2</sup>	2,30m <sup>2</sup>	2,64m <sup>2</sup>	4
AMALIA 3750	3830mm	3750mm	2,82m <sup>2</sup>	2,77m <sup>2</sup>	3,17m <sup>2</sup>	4







**CALL US**  
021 851 0511

**EMAIL US**  
INFO@COOLDISPLAYS.CO.ZA

**VISIT US**  
12 JULIAN WAY  
SOMERSET WEST BUSINESS PARK  
SOMERSET WEST, CAPE TOWN  
SOUTH AFRICA

