

# AMALIA DELUXE

COLD | HOT | BAINE MARIE | HOT PLATES | PIE  
SUSHI COUNTER | OPEN FRONT SELF SERVICE



# TABLE OF CONTENTS

## ABOUT THIS MODEL

1

## AMALIA DELUXE

2

Size Specifications

Technical Specifications

Gallery

## ABOUT THIS MODEL

Combining known reliability with a variety of exposure solutions and relevant energy saving innovations, these cabinets have been developed for quality small and medium food retail outlets.

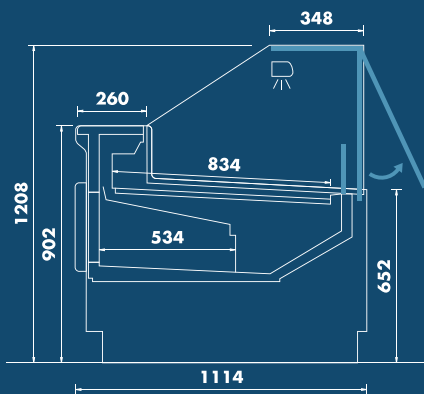
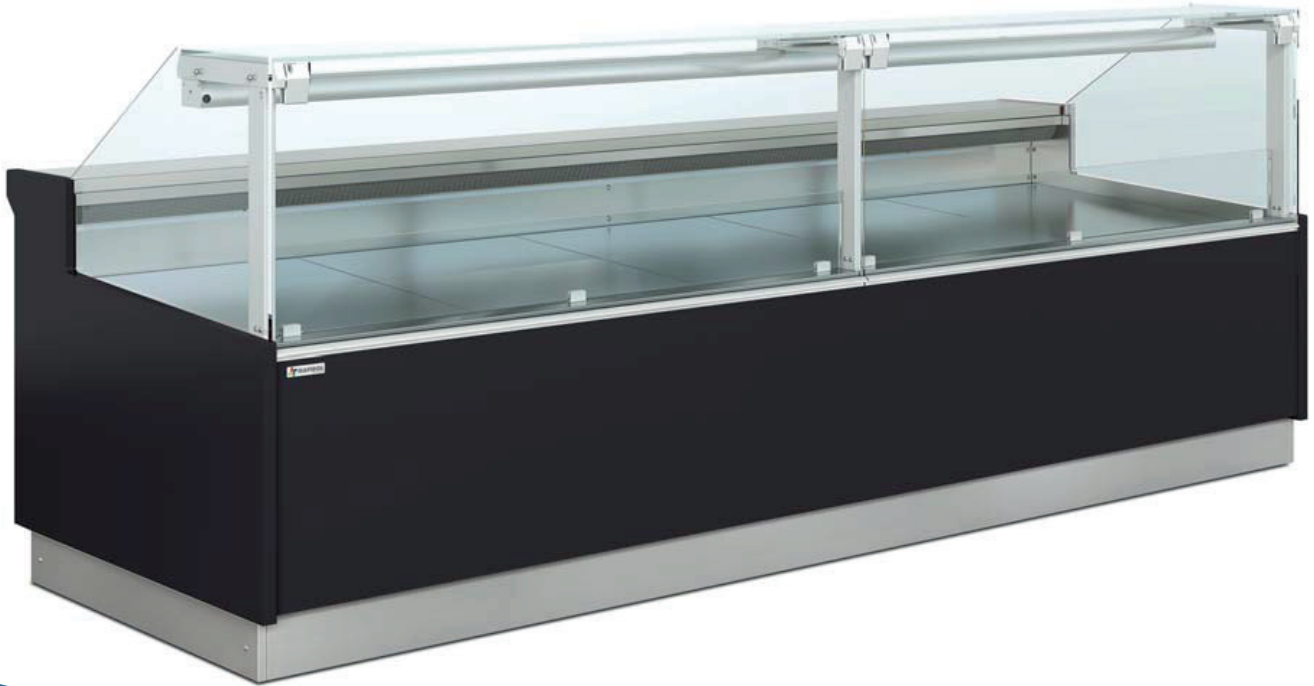
Vertical or curved hydraulic glasses, side panels in PVC, with feet or an apron.

- 1 Year guarantee
- Square Glass and Curve Glass Range available
- Fan assisted refrigeration
- Automatic evaporation of defrost water
- LED lighting
- Anti-mist heating elements for front glasses
- Easy to use electronic controller
- Glass support in anodized aluminium profile
- Display deck in stainless steel
- Glass top
- Other versions available: Cold plate (PF), Refrigerated-gastronorm-containers (CF) Bain-marie (BM), Hot plate (PQ) & Bakery (POA)
- Multiplexible
- Side & front panels in lacquered wood (optional)

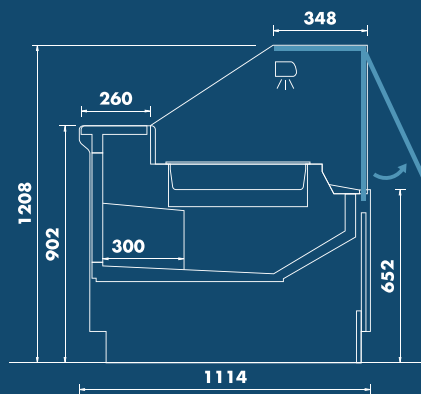


# AMALIA DELUXE

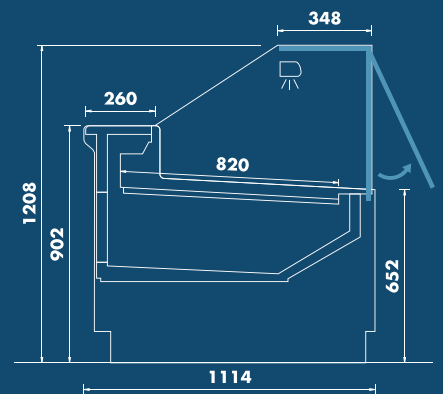
## SIZE SPECIFICATIONS



VVE FV  
C/R



VVE BM



VVE QS

# AMALIA DELUXE

## TECHNICAL SPECIFICATIONS

MODEL	TOTAL LENGTH	LENGTH WITHOUT SIDE PANELS	TOTAL DISPLAY AREA			NUMBER OF DOORS
			VCE/VC FV	VVS FV	SM FV/SMP FV	
AMALIA DELUXE 625	685mm	625mm	0,50m <sup>2</sup>	0,53m <sup>2</sup>	0,80m <sup>2</sup>	-
AMALIA DELUXE 937	997mm	937mm	0,77m <sup>2</sup>	0,80m <sup>2</sup>	1,20	1
AMALIA DELUXE 1250	1310mm	1250mm	1,03m <sup>2</sup>	1,06m <sup>2</sup>	1,61m <sup>2</sup>	1
AMALIA DELUXE 1562	1622mm	1562mm	1,30m <sup>2</sup>	1,33m <sup>2</sup>	2,01m <sup>2</sup>	2
AMALIA DELUXE 1875	1935mm	1875mm	1,55m <sup>2</sup>	1,59m <sup>2</sup>	2,41m <sup>2</sup>	2
AMALIA DELUXE 2500	2560mm	2500mm	2,09m <sup>2</sup>	2,10m <sup>2</sup>	3,18m <sup>2</sup>	3
AMALIA DELUXE 3125	3185mm	3125mm	2,62m <sup>2</sup>	2,64m <sup>2</sup>	-	4
AMALIA DELUXE 3750	3810mm	3750mm	3,15m <sup>2</sup>	3,17m <sup>2</sup>	-	4







**CALL US**  
021 851 0511

**EMAIL US**  
INFO@COOLDISPLAYS.CO.ZA

**VISIT US**  
12 JULIAN WAY  
SOMERSET WEST BUSINESS PARK  
SOMERSET WEST, CAPE TOWN  
SOUTH AFRICA

